



# *Ando Hiroshige*



Kati Patrick



Creative Brief...	2
Navigation Map...	3
Wire Frames...	4
Styles...	10
Files...	11
Credits...	12



## Project Summary

The purpose of the Ando Hiroshige web site, titled simply after the name of the featured artist, will be to showcase his life and works. The Japanese ukiyo-e artist was well known for his numerous landscapes such as the popular 100 Famous Views of Edo (1856 – 1858), created in the later years of his life.

### Content:

- Home: home page featuring several thumbnails of his works
- Biography: a short, yet detailed, biography highlighting the life of the artist, including a portrait
- Gallery: four pages showcasing Hiroshige's works, at least one devoted to the Edo landscapes
- Timeline: a time-based list of information outlining the important events of the artist's life
- Links: a list of links for resources used to create the site and/or related to the site
- Contact: contact information for the site designer

## Design Summary

The overall design of the piece is meant to reflect the clean, contemporary style of modern Asian design. This accentuates the traditional work of the artist while not drawing attention away from the content. The two fonts chosen, Cafilisch Script Pro and Arial Narrow, reinforce this idea again by counterbalancing a traditional style for headers with a simple style for general text. The colors chosen, light beige, gold, light grey, and dark grey, are samples from the palettes of various works Hiroshige created that go well with any color. Since Hiroshige's works span the entire palette, it was necessary to choose colors that would complement each piece.

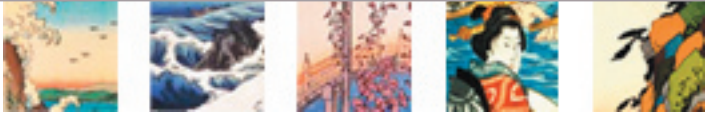
## Audience Profile

Primary: people who are avid fans of Asian art, woodblock prints, and/or landscapes

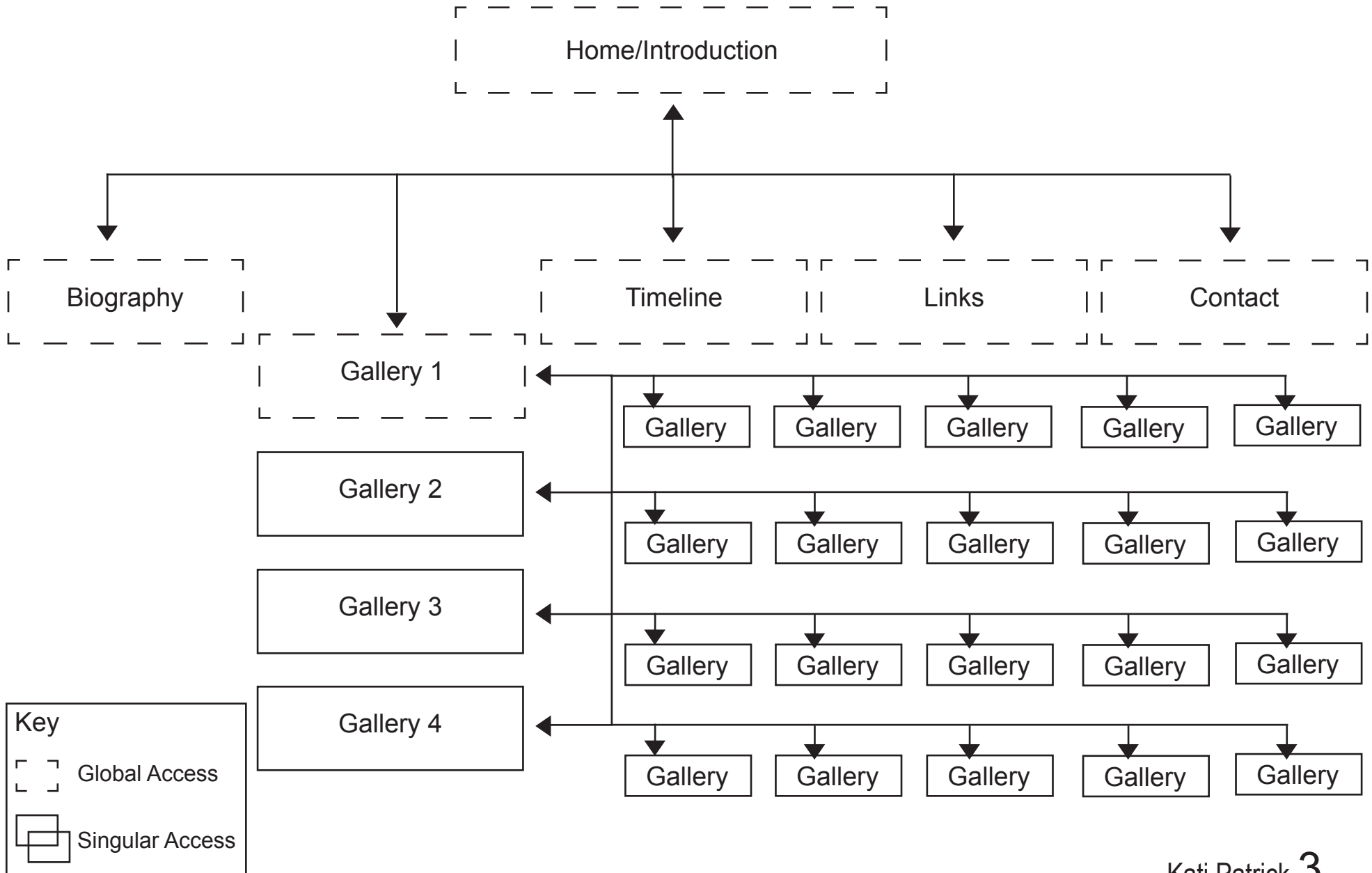
Secondary: those interested in investigating the influences of Monet or Van Gogh, who reproduced a few of the pieces that compose the 100 Famous Views of Edo.

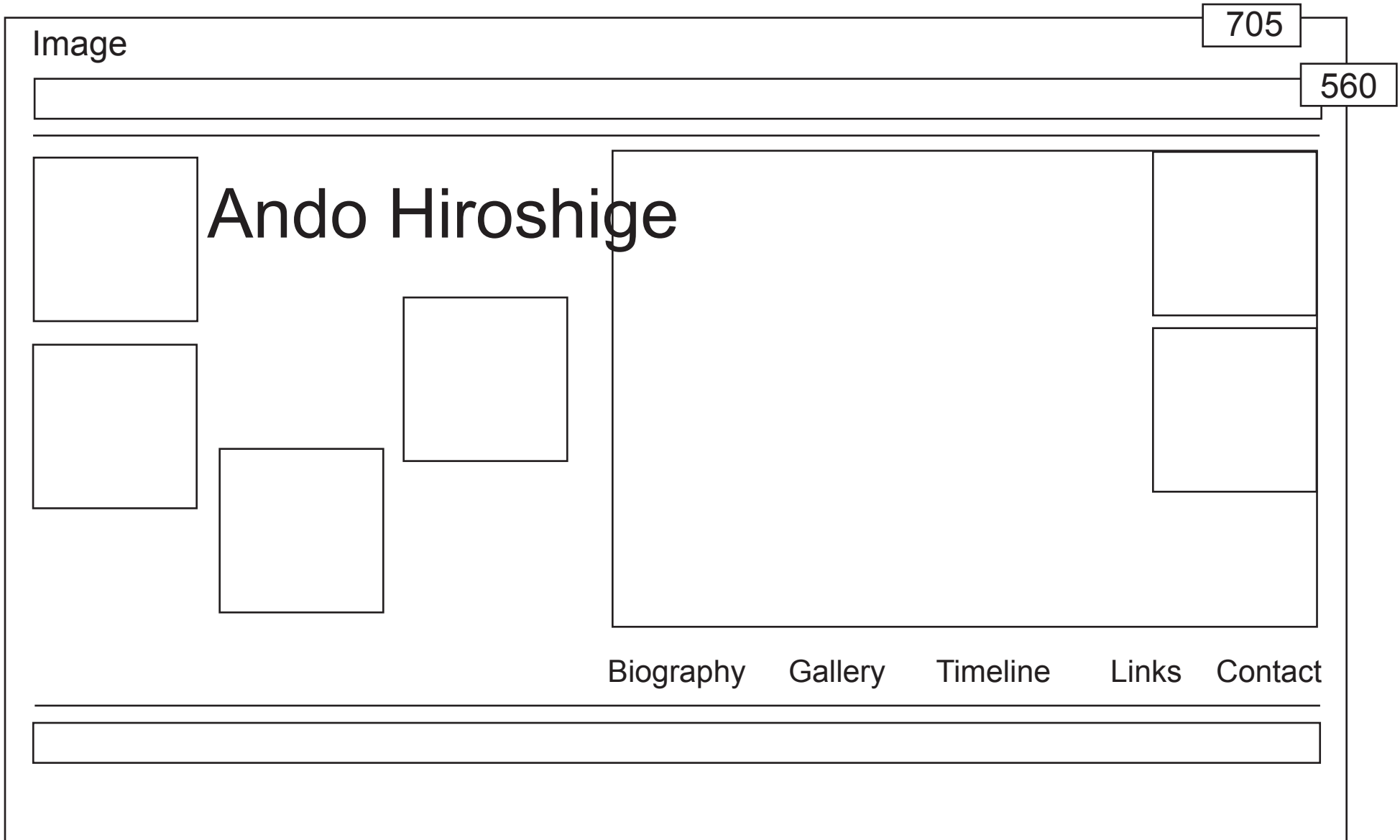
## Perception/Tone

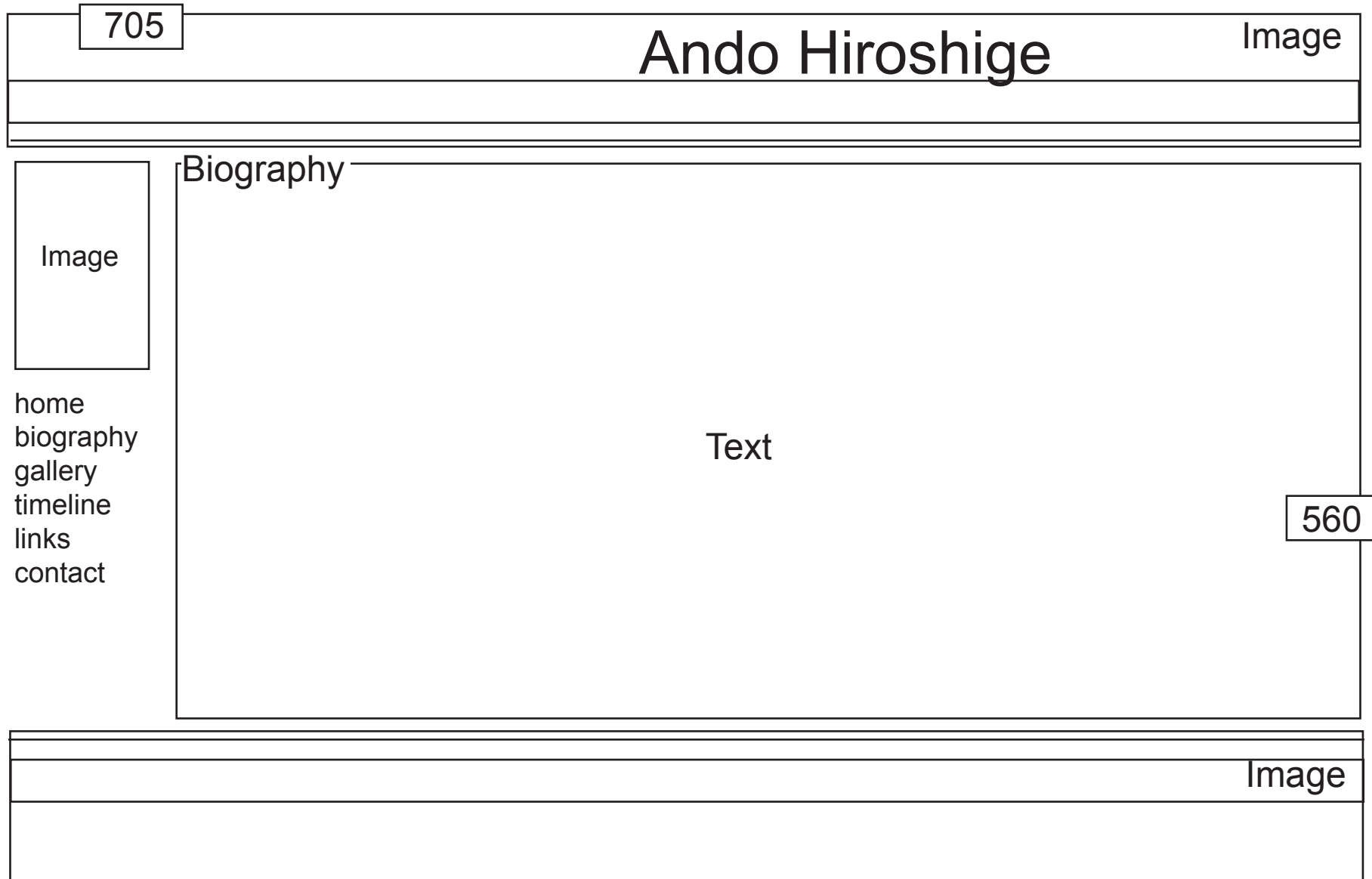
clean, calm

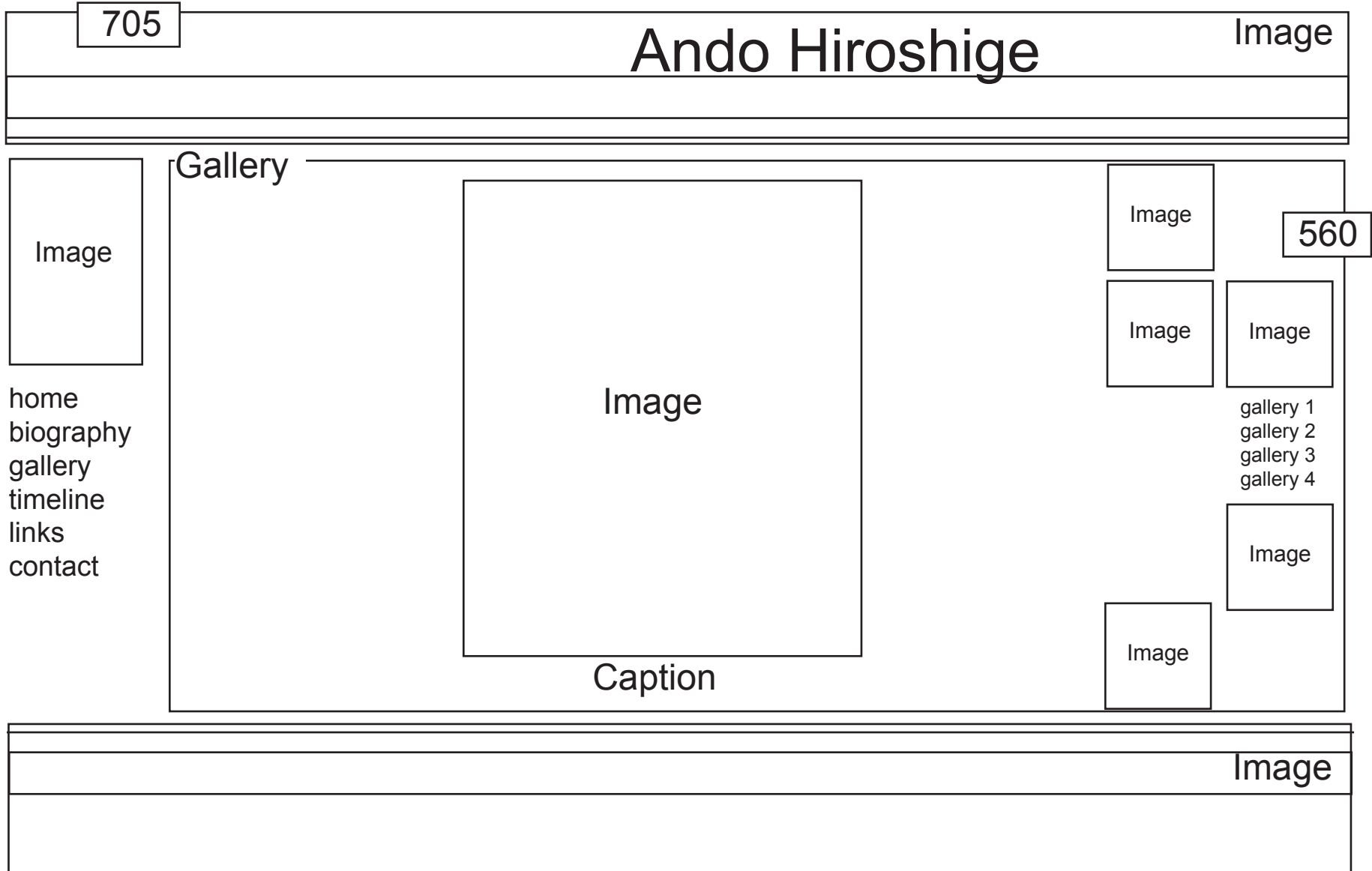
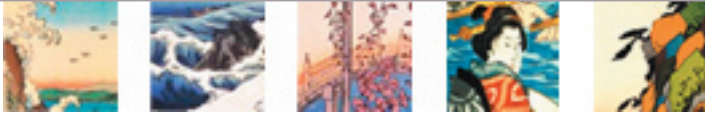


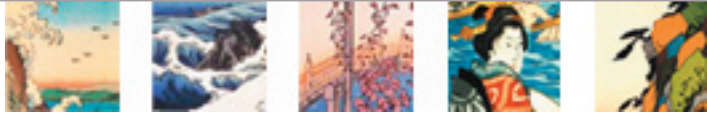
# Navigation Map











705

# Ando Hiroshige

Image

Image

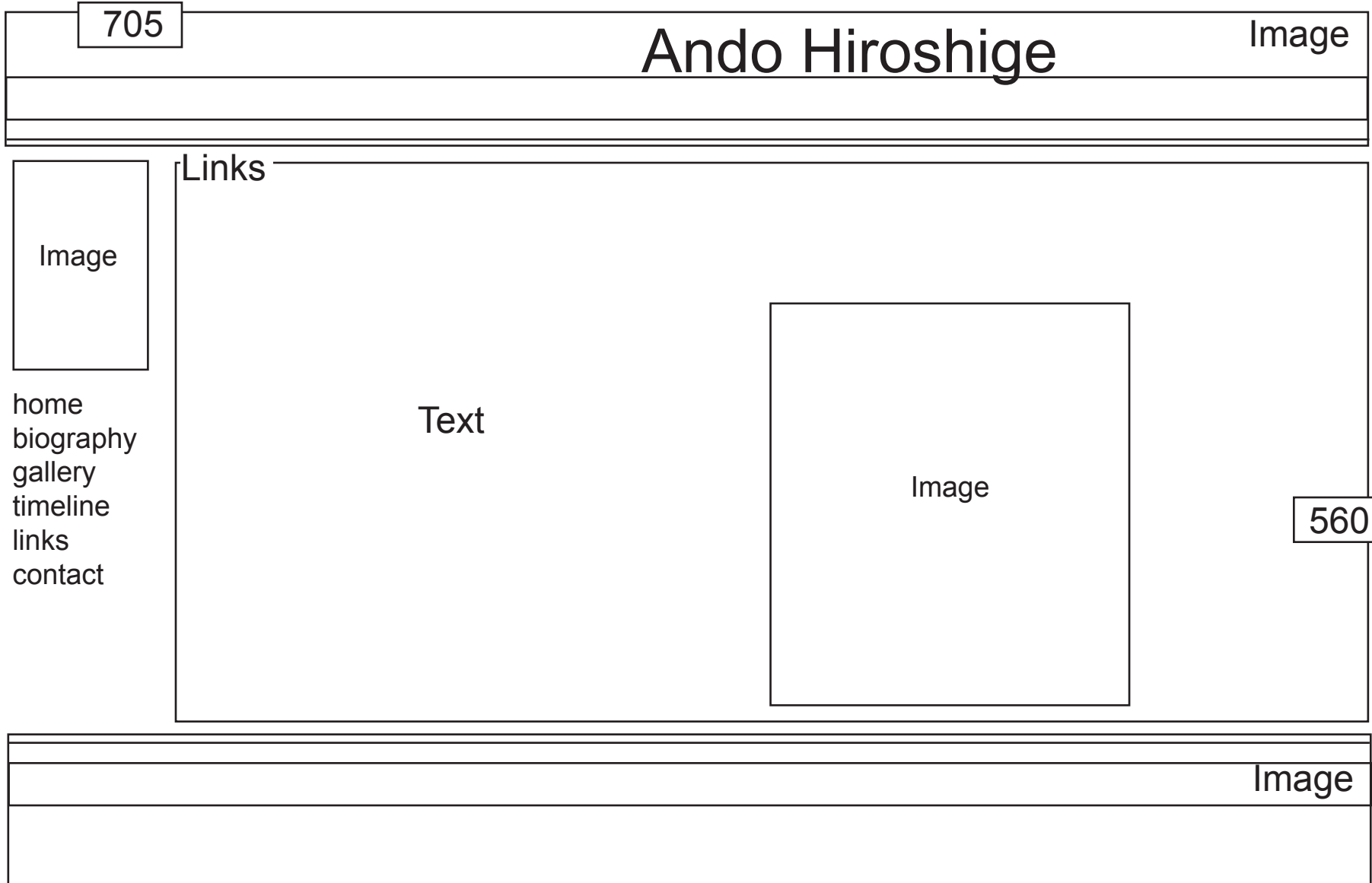
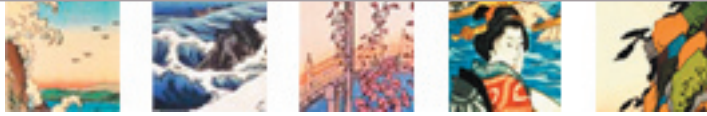
Timeline

Text

- home
- biography
- gallery
- timeline
- links
- contact

560

Image





705

# Ando Hiroshige

Image

Contact

Text

Image

- home
- biography
- gallery
- timeline
- links
- contact

560

Image

Image



## Fonts, HTML

Name: Arial Narrow

Size: Menu 12px, Body Text 14px

Color: #554444

## Fonts, Images

Name: Cafilisch Script Pro

Size: Title 64px, Second Page Header 48px, Second Page Title 30px

Color: #CC9944

## Colors

### Images



Name: Maroon Beige  
Color: #C1A19E



Name: Pink  
Color: #E89CA9



Name: Red  
Color: #AC360E



Name: Maroon  
Color: #884B47



Name: Ochre  
Color: #975A39



Name: Orange  
Color: #E38E33



Name: Beige  
Color: #FFDAB6



Name: Leaf Green  
Color: #A5AB38



Name: Green  
Color: #62926A



Name: Green Grey  
Color: #959C94



Name: Blue  
Color: #7892C2



Name: Blue Grey  
Color: #40463C

### Background



Name: Light Beige  
Color: #FFEECC



Name: Gold  
Color: #CC9944



Name: Grey  
Color: #AAA2A2

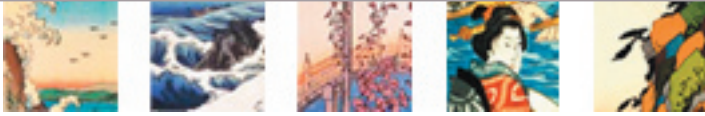


Name: Dark Grey  
Color: #333333



Main Directory:

<a href="#">index.htm</a>	<a href="#">gallerythree.htm</a>
<a href="#">biography.htm</a>	<a href="#">gallerytwo.htm</a>
<a href="#">gallery.htm</a>	<a href="#">galleryv.htm</a>
<a href="#">gallerya.htm</a>	<a href="#">timeline.htm</a>
<a href="#">galleryd.htm</a>	<a href="#">links.htm</a>
<a href="#">gallerye.htm</a>	<a href="#">contact.htm</a>
<a href="#">galleryf.htm</a>	
<a href="#">galleryfour.htm</a>	
<a href="#">galleryg.htm</a>	
<a href="#">galleryge.htm</a>	
<a href="#">galleryk.htm</a>	
<a href="#">gallerym.htm</a>	
<a href="#">gallerymt.htm</a>	
<a href="#">galleryn.htm</a>	
<a href="#">gallerys.htm</a>	
<a href="#">gallerysn.htm</a>	
<a href="#">gallerysu.htm</a>	
<a href="#">gallerysug.htm</a>	



Hiroshige, Ando. The Oi River. c. 1850.

Fine Arts Museums of San Francisco, California. 18 Oct. 2006

<[http://www.thinker.org/imagebase\\_zoom.asp?rec=6248305223730006](http://www.thinker.org/imagebase_zoom.asp?rec=6248305223730006)>.

Hiroshige, Ando. Totsuka. c. 1831-1834.

The Woodblock Prints of Ando Hiroshige. 18 Oct. 2006

<[http://www.hiroshige.org.uk/hiroshige/tokaido\\_hoeido/images/06\\_Totsuka.jpg](http://www.hiroshige.org.uk/hiroshige/tokaido_hoeido/images/06_Totsuka.jpg)>.

Hiroshige, Ando. Navajo Rapids. c. 1855.

The Fine Art Company. 18 Oct. 2006

<<http://www.thefineartcompany.co.uk/orient/FPF211.jpg>>.

Hiroshige, Ando. Gion Shimu in Snow. c. 1850.

Bare Walls. 18 Oct. 2006

<<http://artwork.barewalls.com/artwork/product.html?ARTWORKID=130903>>.

Hiroshige, Ando. The Plain at Suzaki. c. 1852.

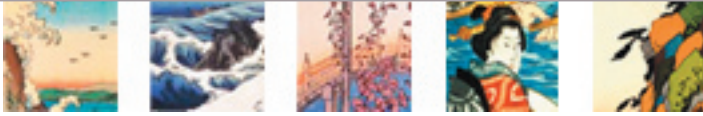
Artcyclopedia. 18 Oct. 2006

<[http://www.artcyclopedia.com/artists/detail/Detail\\_hiroshige\\_ando.html?noframe](http://www.artcyclopedia.com/artists/detail/Detail_hiroshige_ando.html?noframe)>.

Hiroshige, Ando. Hakone. c. 1857.

Hikayu. 18 Oct. 2006

<<http://www.hikyaku.com/gallery/pictureb/hakone.jpg>>.



Hiroshige, Ando. Wisteria at Kameido-Tenjin Shrine. c. 1856.

art.com. 18 Oct. 2006

<[http://www.art.com/asp/sp-asp/\\_/pd--10090985/sp--A/Inside\\_KameidoTenjin\\_Shrine.htm](http://www.art.com/asp/sp-asp/_/pd--10090985/sp--A/Inside_KameidoTenjin_Shrine.htm)>.

Hiroshige, Ando. View from Satta Suruga. c. 1856.

All Posters.com. 18 Oct. 2006

<[http://www.allposters.com/-sp/View-from-Satta-Suruga-Posters\\_i366534\\_.htm](http://www.allposters.com/-sp/View-from-Satta-Suruga-Posters_i366534_.htm)>.

Hiroshige, Ando. Maple Trees at Mama, Tekona Shrine. c. 1854.

Ukiyo-e Reproductions. 18 Oct. 2006

<<http://www.ukiyoe-reproductions.com/html/pictures/lhiroshige15.html>>.

Hiroshige, Ando. Egret and Iris. c. 1857.

Ukiyo-e Gallery. 18 Oct. 2006

<<http://www.ukiyoe-gallery.com/ukiyoe/js1545b.jpg>>.

Hiroshige, Ando. Cat in Window. c. 1858.

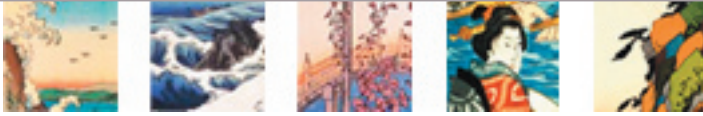
Ukiyo-e Gallery. 18 Oct. 2006

<<http://www.ukiyoe-gallery.com/ukiyoe/js1618b.jpg>>.

Hiroshige, Ando. Autumn Moon at Ishiyama. c. 1853.

Ukiyo-e Reproductions. 18 Oct. 2006

<<http://www.ukiyoe-reproductions.com/pictures/landscapes/lhiroshige21.jpg>>.



Hiroshige, Ando. Maisaka - Inaki Point . c. 1845.

Man-Pai. 18 Oct. 2006

<[http://www.man-pai.com/Room1/eub005\\_g\\_e.htm](http://www.man-pai.com/Room1/eub005_g_e.htm)>.

Hiroshige, Ando. The Fifty-Three Stations of the Tokaido - Yui. c. 1831-34.

The Woodblock Prints of Ando Hiroshige. 18 Oct. 2006

<[http://www.hiroshige.org.uk/hiroshige/tokaido\\_tate-e/images/17\\_Yui.jpg](http://www.hiroshige.org.uk/hiroshige/tokaido_tate-e/images/17_Yui.jpg)>.

Hiroshige, Ando. Sakanoshita. c. 1855.

The Woodblock Prints of Ando Hiroshige. 18 Oct. 2006

<[http://www.hiroshige.org.uk/hiroshige/tokaido\\_tate-e/images/49\\_Sakanoshita.jpg](http://www.hiroshige.org.uk/hiroshige/tokaido_tate-e/images/49_Sakanoshita.jpg)>.

Hiroshige, Ando. The Fifty-Three Stations of the Tokaido by Two Brushes - Futakawa. c. 1857.

The Woodblock Prints of Ando Hiroshige. 18 Oct. 2006

<[http://www.hiroshige.org.uk/hiroshige/tokaido\\_two-brushes/images/34\\_futakawa.jpg](http://www.hiroshige.org.uk/hiroshige/tokaido_two-brushes/images/34_futakawa.jpg)>.

Hiroshige, Ando. Edomurasaki Meisho Genji - Gotenyama Hanami . c. 1840.

The Woodblock Prints of Ando Hiroshige. 18 Oct. 2006

<[http://www.hiroshige.org.uk/hiroshige/views\\_edo/edomurasaki/images/03.jpg](http://www.hiroshige.org.uk/hiroshige/views_edo/edomurasaki/images/03.jpg)>.

Hiroshige, Ando. Sumidagawa no Watashi . c. 1840.

The Woodblock Prints of Ando Hiroshige. 18 Oct. 2006

<[http://www.hiroshige.org.uk/hiroshige/views\\_edo/edomurasaki/images/01.jpg](http://www.hiroshige.org.uk/hiroshige/views_edo/edomurasaki/images/01.jpg)>.



Hiroshige, Ando. Drum Bridge. c. 1856.

Bare Walls. 18 Oct. 2006

<<http://artwork.barewalls.com/artwork/DrumBridge.html?ArtworkID=196273&thumbs=1&productid=223852>>.

Hiroshige, Ando. Evening Snow in Asakusa. c. 1845.

Bare Walls. 18 Oct. 2006

<<http://artwork.barewalls.com/artwork/EveningSnowinAsakusa.html?ArtworkID=53432&thumbs=1&productid=27035>>.

Hiroshige, Ando. Fukagawa Lumberyards. c. 1856.

Tsuru Gallery. 18 Oct. 2006

<<http://www.cosmedgroup.net/tsuru/galleryformhandler.asp?PageStyle=2&SearchStyle=1&SortName=Collection&recordnum=16>>.

Hiroshige, Ando. Sugura Street. c. 1854.

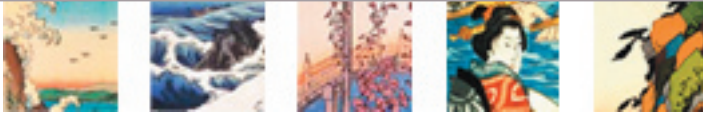
Wikipedia. 18 Oct. 2006

<[http://upload.wikimedia.org/wikipedia/commons/thumb/0/02/Hiroshige,\\_Sugura\\_street.jpg/230px-Hiroshige,\\_Sugura\\_street.jpg](http://upload.wikimedia.org/wikipedia/commons/thumb/0/02/Hiroshige,_Sugura_street.jpg/230px-Hiroshige,_Sugura_street.jpg)>.

Hiroshige, Ando. Autumn Moon Over Tama River. c. 1847.

art.com. 18 Oct. 2006

<[http://www.art.com/asp/sp-asp/\\_/PD--12445150/SP--A/IGID--1421881/Autumn\\_Moon\\_Over\\_Tama\\_River.htm?sOrig=CRT&sOrigId=51909&ui=43267EDFA0BD475696581AC1740FDB5E#>](http://www.art.com/asp/sp-asp/_/PD--12445150/SP--A/IGID--1421881/Autumn_Moon_Over_Tama_River.htm?sOrig=CRT&sOrigId=51909&ui=43267EDFA0BD475696581AC1740FDB5E#>).



Hiroshige, Ando. Genji Monogatari Gojuyojo. c. 1855.

The Woodblock Prints of Ando Hiroshige. 18 Oct. 2006

<[http://www.hiroshige.org.uk/hiroshige/historical\\_subjects/tales\\_genji/images/genji04.jpg](http://www.hiroshige.org.uk/hiroshige/historical_subjects/tales_genji/images/genji04.jpg)>.

“The Beauty & the Actor: Ukiyo-e.” Artchive. 18 Oct. 2006

<<http://www.artchive.com/artchive/H/hiroshige.html>>.

“Ando Hiroshige.” Web Museum. 18 Oct. 2006

<<http://www.ibiblio.org/wm/paint/auth/hiroshige/>>.