

SETTING UP THE SERVER

In order to receive a grade for any assignment or project you are required to have a working copy on your server.

AIW provides each student with server space. You can access this space through your AIW online account. But it will be a lot easier if you access the space via an FTP program. WS FTP is on the school PCs and Fetch is on the school Macs. One of the main advantages of using an FTP program instead of accessing the server via your account is that you can upload more than one file and also upload folders. You can only upload one file at a time via your school account. Other advantages of using an FTP program are that you can download files from the server. Also the interfaces on the FTP programs are much more user friendly.

Both WS FTP and Fetch cost about \$30. In most cases you should be able to download a trial version which will allow you to use the program for about thirty days.

Below are instructions on how to use WS FTP

START>PROGRAMS>Ipswitch WS_FTP its possible that we might be using another WS_FTP program if so the panels show might look slightly different

A number of panels will open close all panel except the one below.

This panel is split into two sections the one on the left is your computer. Once you are connected to the server the server files will show in the right hand section.

FIRST

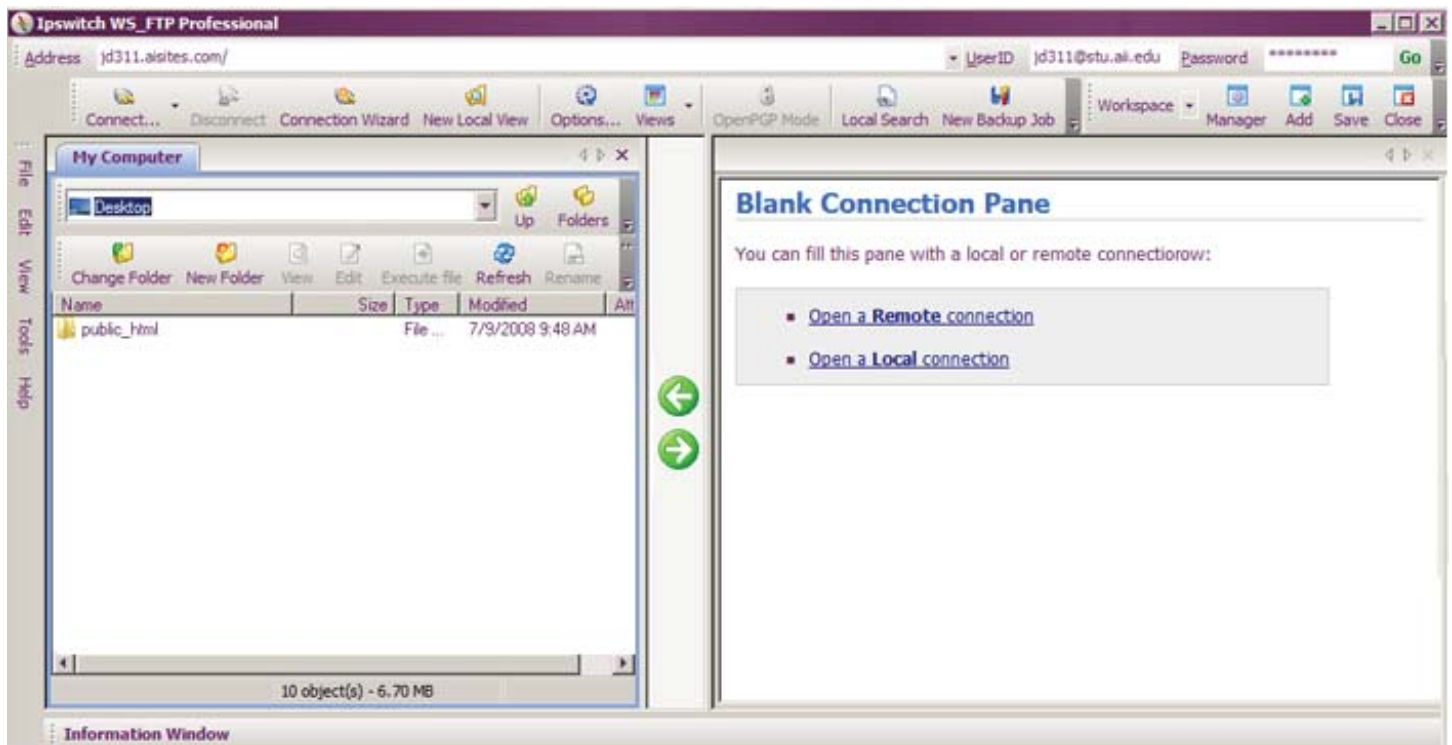
Click on OPTIONS

For Auto Reconnect select>Open Blank

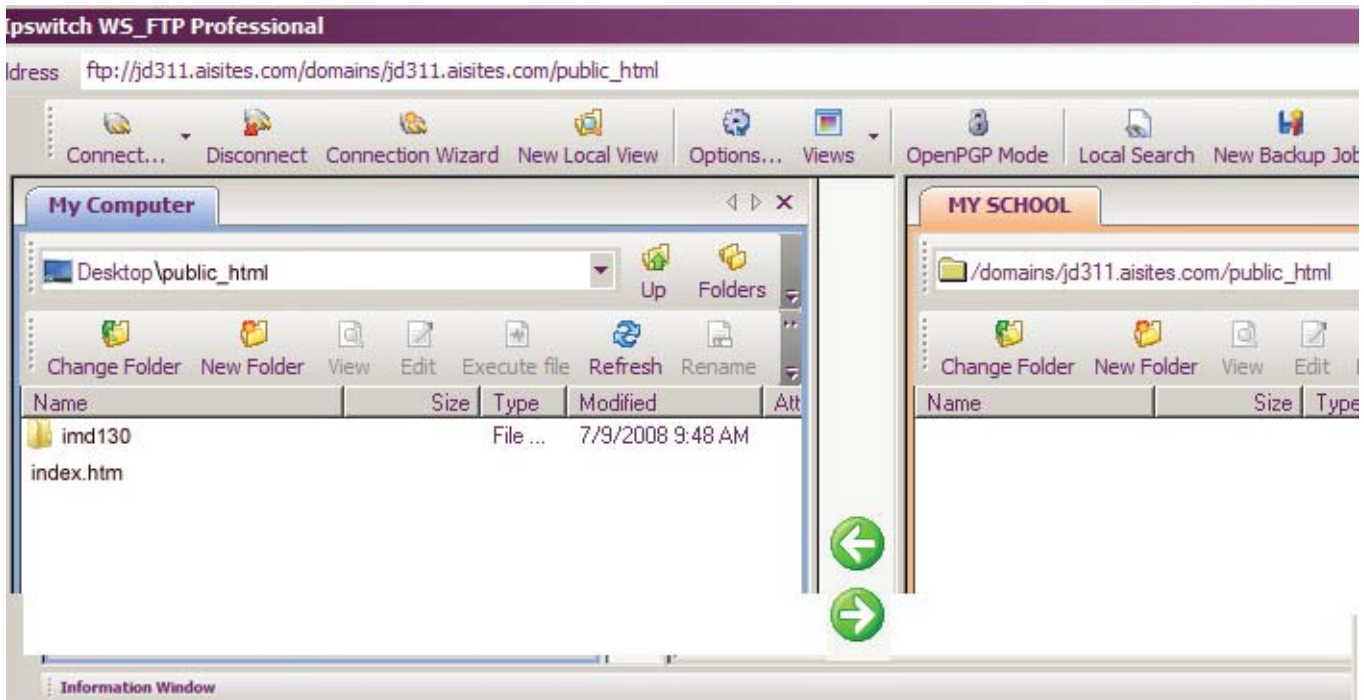
Also select> Allow deletion of non-empty folders

CONNECT TO SERVER

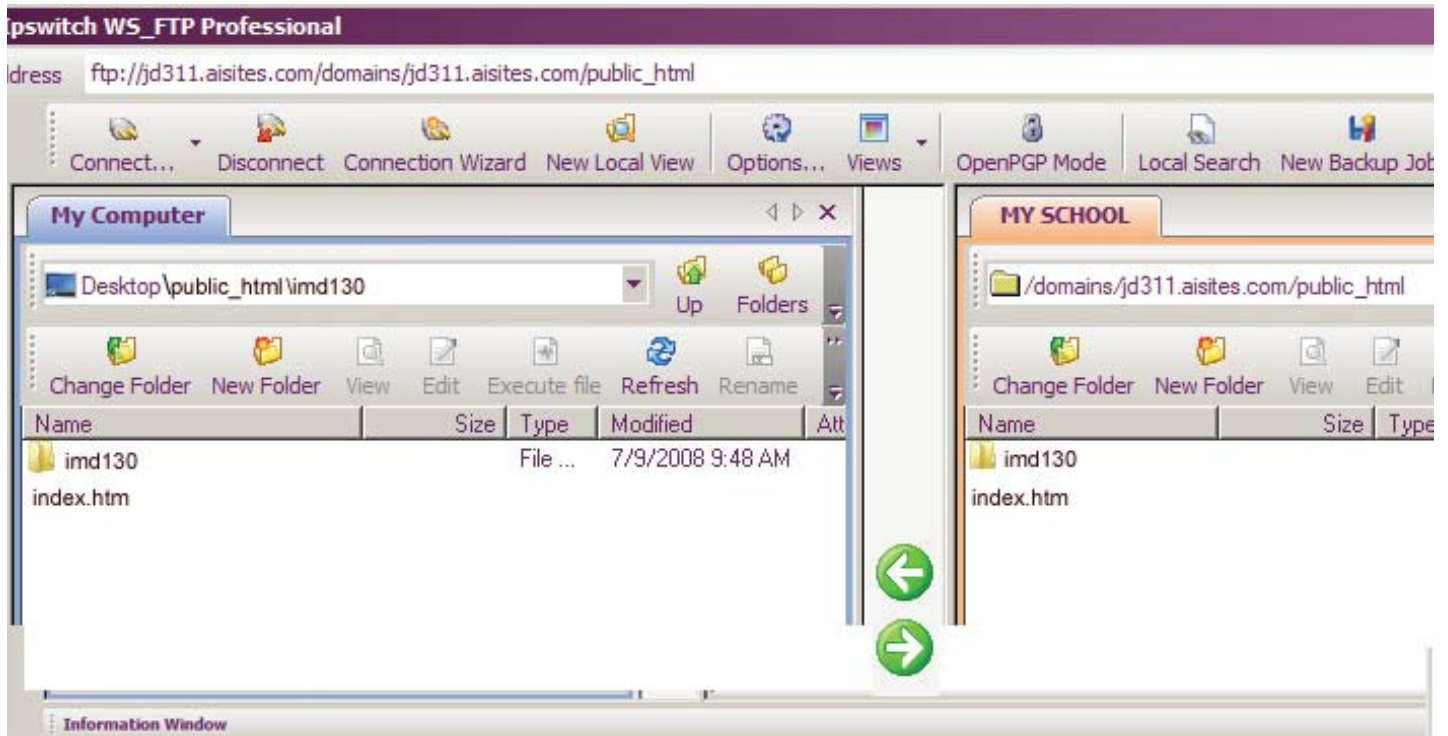
Address: fill in your web address this will be the same as shown below except it will have your id at the beginning



You should now have a folder (directory) named public_html in each of the panels. Double click on both folders. The panels should look something like those below but you may have more files on both the server and desktop



You now need to upload your files to the server. Select the folder imd130 and the file index.htm. Next click on the arrow that is pointing to the right. Your files will now begin to upload. Once the files have uploaded the panels should be similar to those shown below.

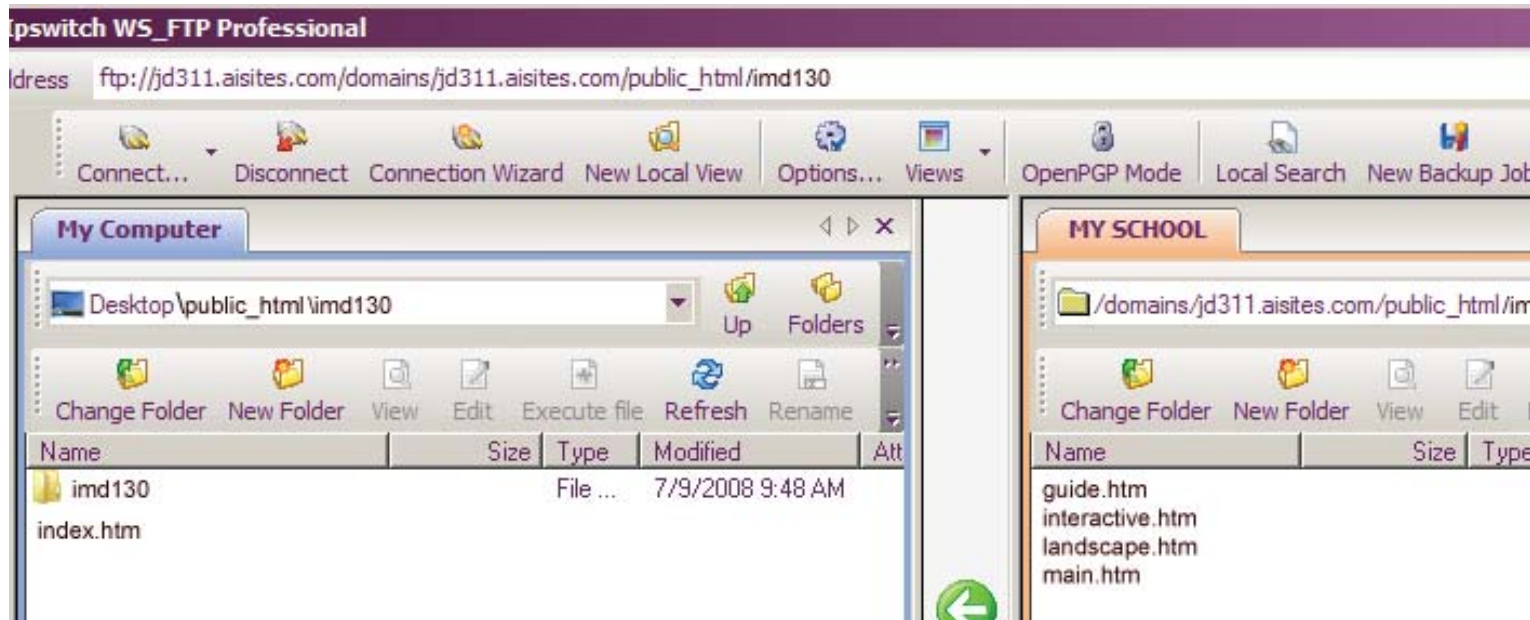


Whenever you need to upload files for a particular class you will just need to add a folder for that class.

You will link to the files for all classes from the first index.htm file.

Double click on the folder imd130.

The files that you have on the server should be as shown below.



As you complete the three assignments and the main project you need to name the swf files:

landscape.swf

interactive.swf

guide.swf

main.swf

The files need to be named as shown above because this is how they are referenced in each of the web pages shown in the right panel.

You will need to make changes to some of those web pages (sizes and background color) in which case you need to delete the file and upload the new file to the server.

The new file must have the same name as the one deleted. The changes that you need to make to the web page are discussed below.

For the web page index.htm you use need to place you name for the title and on the page.

For the other web pages you will need to:

Place the name of you piece in the title.

Change the sizes for the flash piece: This is in two sections

Change the background color for the page.

Change the background color for the flash piece: This is in two sections.